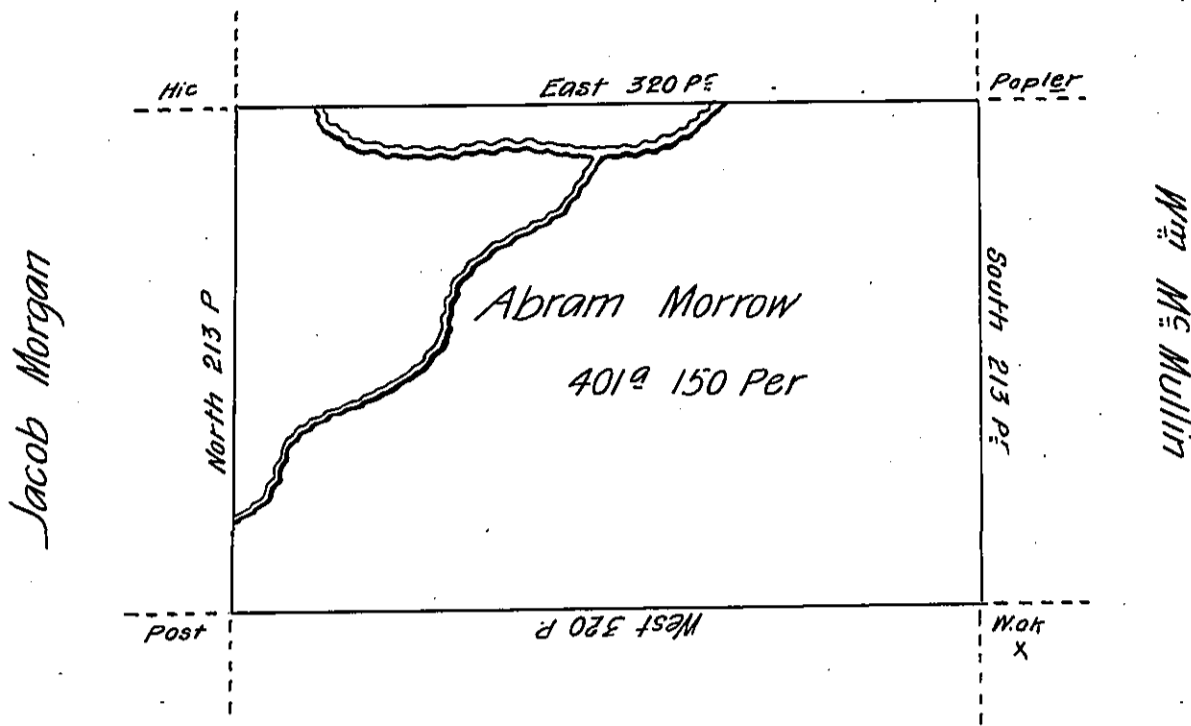


Geo. Moreton



John Mitchell

Situate on the West side of French Creek in Allegheny County

Containing 401 acres and 150 P. and allowance of Six Per. Cent for Roads &c.

Surveyed the 3^d day of June 1795. In Pursuance of a Warrant dated the 30th day of May 1792.

Wm Power Dy 5^t

To Dan^l Broadhead Esq^r

Surveyor General.

IN TESTIMONY that the above is a copy of the original remaining on file in the Department of Internal Affairs of Pennsylvania, made conformably to an Act of Assembly approved the 16th day of February, 1833, I have hereunto set my Hand and caused the Seal of said Department to be affixed at Harrisburg, this twenty first day of December 1905.

Geo. D. Downing
Secretary of Internal Affairs.